



To arrange a viewing
please call 01908 675747

Two bedroom ground floor flat situated within the popular Tattenhoe development, located to the West of Milton Keynes. This property is in good condition and benefits views over open fields, two double bedrooms, an Ensuite to master bedroom, kitchen/diner, large lounge and allocated parking.

*** Inquire Now ***

Two Bedroom Ground Floor Flat Situated In The Tattenhoe Development.

- Ground Floor Flat
- Two Double Bedrooms
- Open Fields
- Ensuite To Master
- Kitchen / Diner
- Large Lounge
- Allocated Parking

LOCATION: TATTENHOE

Tattenhoe lies to the South West of Milton Keynes. The area has a rural style, with part of it being woodland (Howe Park Wood) and a linear park running through it. Lower education is at Giles Brook Combined School. There is a local shopping district nearby of Westcroft Centre, which has a large supermarket and a varied selection of other stores.

Entrance Hall

Kitchen
12'1" x 9'3"

Living Room
16'0" x 12'2"

Master Bedroom
12'10" x 10'11"

Bedroom 2
10'11" x 8'7"

En-suite Bathroom
10'11" x 3'3"

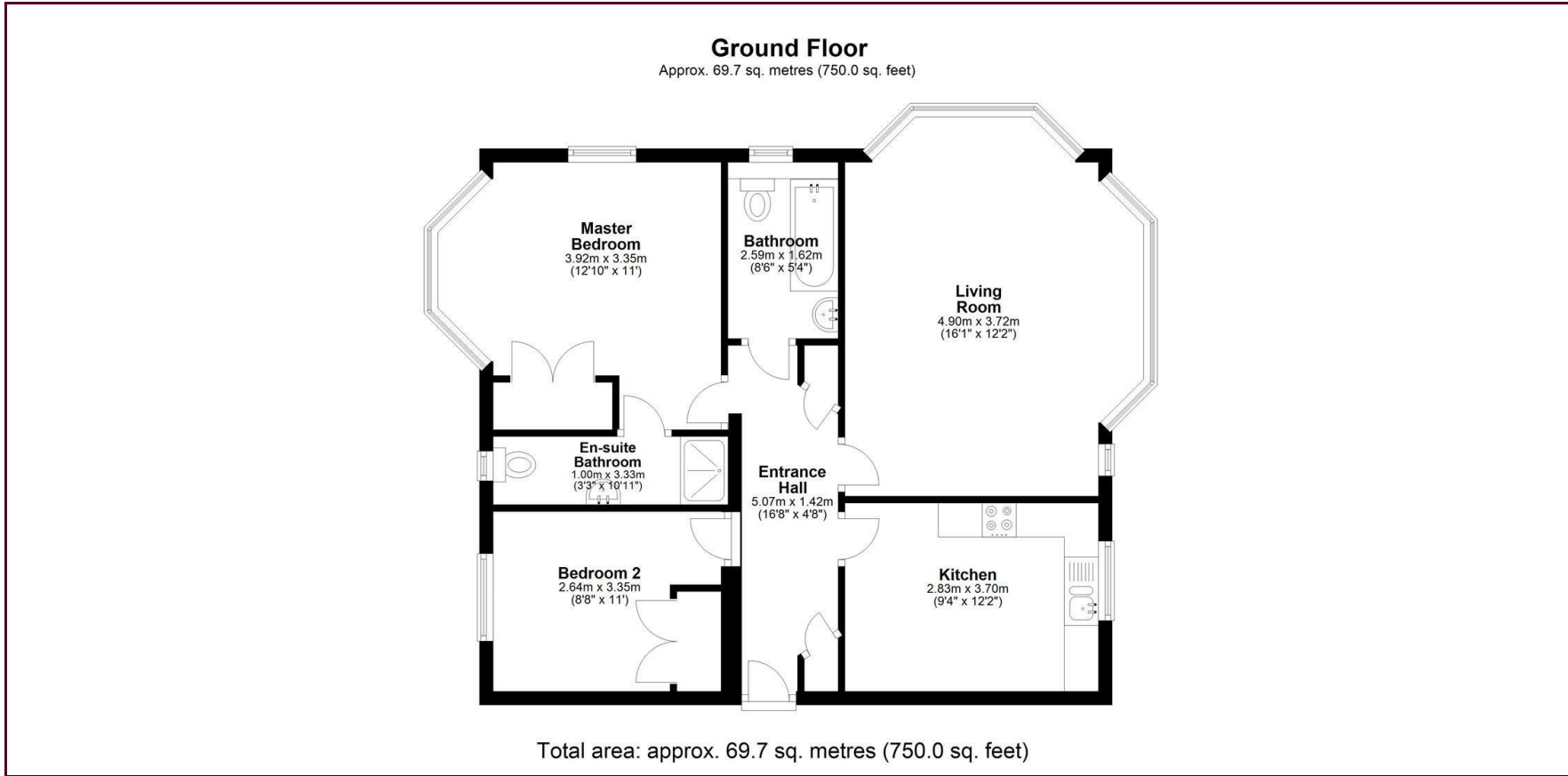
Bathroom
8'5" x 5'3"



To arrange a viewing
please call 01908 675747



To arrange a viewing
please call 01908 675747



Energy Efficiency Rating		
	Current	Potential
Very energy efficient - lower running costs		
(92 plus) A		
(81-91) B		
(69-80) C	77	79
(55-68) D		
(39-54) E		
(21-38) F		
(1-20) G		
Not energy efficient - higher running costs		
England & Wales	EU Directive 2002/91/EC	

Draft Details

These details have been submitted to our clients but at the moment have not been approved by them. We therefore, cannot guarantee their accuracy and they are distributed on this basis. Please ensure you have a copy of our approved details before committing yourself to any expense.

Whilst we endeavour to make our sales details accurate and reliable, if there is any point which is of particular importance to you, please contact the office and we shall be pleased to check any information for you. Do so, especially if travelling any distance to view the property.

The mention of any appliances and/or services within these details does not imply they are in full and efficient working order.

Any plans included within these details are a GUIDE TO THE LAYOUT OF THE PROPERTY ONLY and are NOT DRAWN TO SCALE. Dimensions are approximate.

Mortgage Information

We can offer independent mortgage advice. Please call us to discuss your requirements. Your home may be repossessed if you do not keep up repayment on your mortgage or any loans secured on it.

Property Valuations

We have some of the most experienced property valuers in Milton Keynes and would welcome the opportunity to carry out a VALUATION and MARKET APPRAISAL of your home.

Viewing Arrangements

Please call us to make an appointment to view this property.

Monday to Friday 9.00 am - 6.00 pm
Saturday 9.00 am - 4.00 pm
Sunday CLOSED

